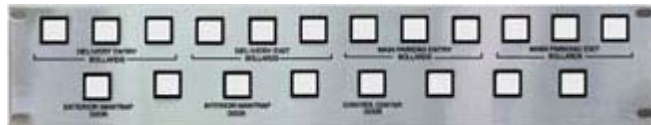


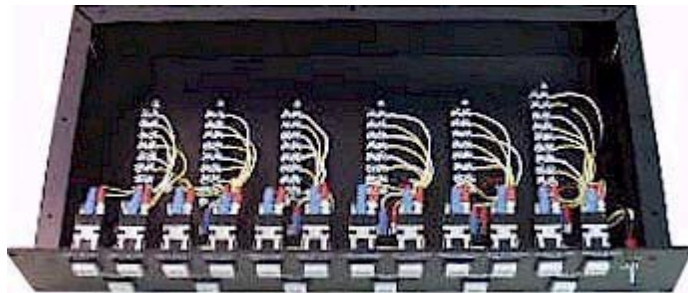
The Rack Mount Panel is a 19" rack-mountable enclosure ideal for housing a variety of components for remote control or monitoring of security systems. Applications include pushbutton control for internal and external doors, vehicle access gates, and system status monitoring. The unit is highly configurable to meet custom specifications, and is available with any combination of momentary action pushbuttons, maintained action pushbuttons, toggle switches, or LED's required for specific applications.

Available in anodized aluminum w/ custom silkscreen graphics, or stainless steel w/ custom engraved graphics.



FEATURES

- ◇ AML Series 21 Pushbuttons, rated 2A, 250VAC and 24VDC resistive; 3A, 125 VAC
- ◇ Barrier Style Terminal Strips with Integral Square Washers for positive wire retention;
rated 150Vrms @ 20A and withstanding voltage: 7500Vrms
- ◇ Anodized Aluminum or Engraved Stainless Steel
- ◇ Custom Silkscreen Graphics
- ◇ 19" Rack Mountable



The use of terminal strips with positive grip connectors facilitates installation and field wiring management. Individual components can be easily replaced or reconfigured as needed. Pushbutton switches are available lighted or unlighted, and custom silk-screened graphics are available for specific applications.